

M A N A Y G E M N T
C I V I L U R C O B U A
I N F R A U T O T F T L A I
C T N O E S N C T A S U P
S H A R C E D
U N L H R T E
L O L C I S C R S
T L A C I S C R S
A O T O T F T L A I
M E T R A N S E N G I N E E R I N G
E M U K N D T U C I O T C A U E S N
N S R S I S R R Y C N R T S C N P
T A S U O A S A U I T T O
L M C P L C R B U R
T U R E
O R I T Y

ETTRANS
e n g i n e e r i n g

ELECTROMAGNETICA BUSINESS PARK

| www.me-trans.ro | office@me-trans.ro



METRANS ENGINEERING is a company founded in 2018, exclusively with Romanian capital, which aims to respond efficiently to any type of client.

METRANS ENGINEERING is specialized in providing integrated, multidisciplinary solutions for underground and over ground public transport infrastructure and civil engineering.

Our motto, **JUST DESIGN**, requires creativity and leads to integrated solutions which can be seen in the **METRANS ENGINEERING** projects, all while taking into account our client's requirements.

This way **JUST DESIGN** gives rise to functional, easy to exploit, structurally stable constructions and to cost effective technological systems and installations.

All of the phases of the investment implementation, from the concept to a rigorous site tracking, are done by a multi disciplinary experts, thus ensuring the safety of our clients' investments.

METRANS ENGINEERING is made up of a dynamic team with over 15 years of experience in designing and consultancy services for subway/public transport infrastructure (mainly underground) and civil engineering.

Our architects and engineers, designers and construction management consultants are eager to respond to our clients' challenges with long term analysis and tailored solutions.

We are also aware of our social responsibility, that of providing solutions which bring together a sustainable, natural/safe and built environment.

2019:
Turnover – 248.000 €
Profit – 69.000 €
12 employee

2020:
Turnover – 932.000 €
Profit – 320.000 €
17 employee

2021
Turnover – 1.990.000 €
Profit – 490.000 €
22 employee

ABOUT US

METRANS ENGINEERING has implemented and maintains a **Quality Management System**, in accordance to the requirements from the ISO 9001:2015 (SR EN ISO 9001:2015) standard, according to the **SRAC** AND **IQNET** certificates no. 11605/21.11.2018 for the following activities: engineering, design, consultancy, management and technical support related to public or private investments, for public transport systems and for civil or industrial buildings.

METRANS ENGINEERING holds permits issued by the Ministry of Internal Affairs - **The General Inspectorate for Emergency Situations - IGSU** - The National Center for Fire Safety and Civil Protection for:

- designing fire alarm and fire detection systems and installations;
- designing the fire extinguishing and fire limiting systems and installations;
- designing the smoke and hot gas exhaust systems and installations, except for gas of a naturally organized nature.

METRANS ENGINEERING is authorized by the **National Regulatory Authority for Energy - ANRE** to design interior/exterior electrical installations for civil and industrial buildings, underground or over ground connections at a nominal voltage of 0.4kV.

METRANS ENGINEERING holds the approval of the specialized technical body of the Ministry of Transport in the railway and metro transport sector - **the Romanian Railway Authority - AFER**.

ETTRANS

engineering





ROMÂNIA
MINISTERUL TRANSPORTURILOR,
INFRASTRUCTURII ȘI COMUNICAȚIILOR
AUTORITATEA FERROVIARĂ ROMÂNĂ – AFER

**AUTORIZAȚIE
DE FURNIZOR FERROVIAR**
Seria AF Nr. 8067

În conformitate cu prevederile Hotărârii Guvernului nr. 628/1998 cu modificările și completările ulterioare și în baza raportului nr. 4160 din data de 06.03.2020 al comisiei de evaluare, se atestă că persoana juridică:

METRANS ENGINEERING S.R.L.

cu sediul în orașul București, Sectorul 5, Calea Rahovei, Nr. 266-268, CORP 2, PARTER, AXELE A-B, STĂLPIL 1-3, CAMERA 02, înregistrată la Oficiul Național al Registrului Comerțului sub nr. J40/9129/2018, Cod Unic de înregistrare 39543312, are dreptul să furnizeze, în calitate de furnizor feroviar, următoarele categorii de produse și/sau servicii feroviare critice:

- Servicii de proiectare și consultanță în domeniul infrastructurii feroviare și de metrou cu excepția instalațiilor feroviare și de metrou;
- Servicii de proiectare și consultanță instalații feroviare și de metrou, cu excepția instalațiilor de automatizare a traficului,

În condițiile în care face dovada că deține un certificat de omologare tehnică feroviară sau, după caz, un acord tehnic feroviar, pentru fiecare produs și/sau serviciu feroviar critic furnizat.

Prezenta autorizație este valabilă până la data de 06.03.2025, în condițiile vizării sale anuale.

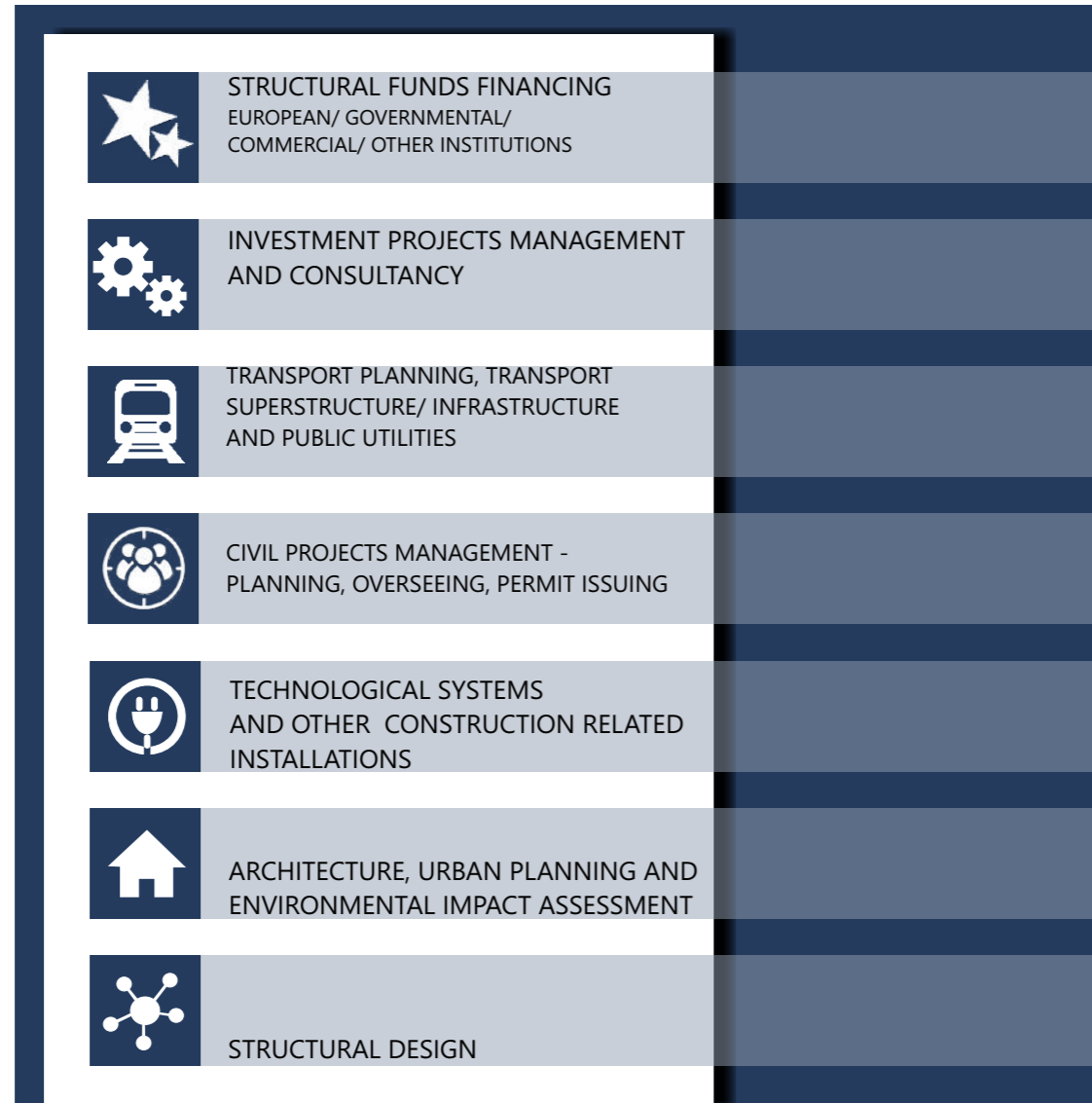
Obligațiile și drepturile posesorului autorizației, precum și vizele anuale sunt specificate pe verso.

Data eliberării: 06.03.2020

DIRECTOR GENERAL
Iordan VINTILĂ



CERTIFICATIONS



OF ACTIVITY

AREAS

METRANS
e n g i n e e r i n g

OF ACTIVITY



STRUCTURAL FUNDS FINANCING
EUROPEAN/GOVERNMENTAL/COMMERCIAL/
OTHER INTERNATIONAL FINANCIAL INSTITUTIONS

We offer the support and opportunity to finance through european/governmental funds, other international financial institutions, world funds, european, asiatic, depending on the project's objectives to both private and public clients who wish to invest in a succesful idea, alongside the framing in every financial investor's procedure.

To this end, we'll go through the next steps:

- We listen to your idea, understand the business and together we can identify the best strategies to reach to proposed objectives;
- We figure out which European Financing Program your project fits into and establish the eligibility criteria in order to lay the groundwork to obtain the financing;
- We draw up the financing application, offer consultancy in regards to resource management, objectives and results of the project.

AREAS

RADU GABRIEL DUMITRU
GENERAL MANAGER
+40 723 218 102

STRUCTURAL FUNDS FINANCING
EUROPEAN/ GOVERNMENTAL/
OTHER FINANCIAL INSTITUTIONS
PROJECT MANAGEMENT





Metro line 6

Feasibility Study, transport demand study, cost-benefit analysis, Preliminary Technical Project (Structural engineering, Architecture, Electromagnetic, electroenergetic and low voltage installations, Railway, Traffic automatization, Rolling stock), auction documentation.

Metro line 5;
Metro line 4;

Updating the ventilation installations of Metro lines 1, 2, 3.
The Petrache Poenaru-Timpuri Noi segment
Feasibility Study and General Estimate

Civil buildings projects

Cargo Terminal - Iasi Airport;
Residential Projects;
Kindergarten, Schools, Municipality buildings, Bruckental Castle Reconstruction, Caraiman Hotel/Buşteni, Boutique Hotel/ Bucharest.

GENERAL MANAGER

STRUCTURAL FUNDS FINANCING
EUROPEAN/ GOVERNMENTAL/ COMMERCIAL/ OTHER
INTERNATIONAL FINANCIAL INSTITUTIONS

UNIVERSITY STUDIES

Civil installations engineer
U.T.C.B.–Technical University of Constructions
Bucharest,
Engineering Faculty,

WORK EXPERIENCE

Project Manager and European Funds Expert
Responsible with managing the relationship with the Client and the Authorities (Ministry of Transport, Bucharest City Hall and Ilfov County Council, Otopeni City Hall, Civil Aeronautical Authority, CNAIR, National Airport Company Bucharest, Management Authority within The European Funds Ministry, Intermediary Office for European Funds within the Ministry of Transport.
Responsible for the preparation of the Financing Application for obtaining European non-reimbursable funds within the OPIM 2014-2020 operational program.

Assistant Manager and European Funds Expert
Responsible for the preparation of the Financing Application for obtaining European non-reimbursable funds within the POS-T 2007-2013 and the OPIM 2014-2020 operational programs.
Responsible with managing the relationship with the Client and the Management Authority within The European Funds Ministry and the Intermediary Office for European Funds within the Ministry of Transport

Electromecanic system designer
(Ventilation installations, smoke evacuation, climate control, thermal, sanitary, fire extinguishing)

AREAS OF ACTIVITY



CONSULTANCY AND PROJECT MANAGEMENT

The management process, starting with the idea of investing and ending with the commissioning of an investment, is complex. In order for a management to lead to the success of a project, it is necessary to go through a process that mainly involves: preliminary preparation (prefeasibility / feasibility), preliminary and detailed design, procurement and contracting (preparation of awarding documentation, especially technical and qualification requirements for the selection of contractors to ensure the achievement of the projected parameters of the investment), approvals and authorizations, follow-up of the implementation of the contract, reception at the completion of the works and commissioning. There is no investment where there is no problem. It is important that management anticipates the contingency and finds the methods by which the team responds quickly to both anticipated and current issues.

IONEL OPREA
BUSINESS DEVELOPMENT DIRECTOR
+40 722 718 312

CONSULTANCY AND
PROJECT MANAGEMENT



OPREA IONEL



BUSINESS DEVELOPMENT DIRECTOR CONSULTANCY AND PROJECT MANAGEMENT

UNIVERSITY STUDIES
Electroenergetic engineer
Polytechnic University Bucharest,
Faculty of Power Engineering,
Electroenergetics Department

WORK EXPERIENCE

- Metro line 6**
- Metro line 5**
Feasibility study, related studies and analysis, documentation necessary for obtaining the approval through Governmental Decision, preliminary Technical Project, Documentation necessary for obtaining the required City Planning Certificate, Permits and Agreements, documentation necessary for obtaining the environment Permit and Agreement, Urban Planning documentation related to the Urban Zoning Plans, Documentation for the allocation of contracts for execution, services, procurement, including the drafting and updating of the Project Implementation Program, General Estimate, Estimates by object, Financial estimates
- Metro line 4**
Segment 2. Gara de Nord- Străulești.
Drafting the Feasibility Study, related studies and analysis, drawing up the Technical Project and the Allocation Documentation
- Upgrading installation systems on the 1, 2, 3, TL Metro lines. Improving the transport conditions on Metro line 2. Railway and interstation installations**
- Metro line 7**

- Assistant Project Manager
Assisting or standing in for the Project Manager to coordinate the team for the Metro line 6 project. 1Mai - Otopeni in order to establish technical-economic design solutions for all phases of the project.
- Project Manager**
Coordinating the team for the Metro line 5 project. Drumul Taberei- Pantelimon in order to establish technical-economic design solutions for all phases of the project.
- Contract manager (Assistant Project Manager)**
Supervising the adequacy of the Metro line 4, segment 2, Gara de Nord - Straulesti team's activities throughout all of the phases of the project, from the design to the Technical Support during the construction work period, the reception period and the putting into operation period.
Effective involvement in project management through monitoring, control and ongoing assistance provided to the Project Manager.
Direct verification of the strategic documents of the Project: Documentation for obtaining financing from European funds including the project implementation Program, the financial Plan, the acquisitions and expenditure Plan, the General Estimate.
- Assistant Project Manager
- Assistant Project Manager

DE ACTIVITATE



TRANSPORT PLANNING TRANSPORT SUPERSTRUCTURE/INFRASTRUCTURE AND PUBLIC UTILITIES

Our team transport planners and traffic engineers have experience in providing innovative solutions across transport infrastructure projects:

- Major corridor studies;
- Strategic master planning;
- Urban development plan;
- Traffic impact assessments.

METRANS ENGINEERING designs according to the standards and norms related to each mode of transport, taking into account to the employer requirements:

- Establishing the best alignment with the help of dedicated software;
- Designing the transport superstructure in accordance with traffic characteristics and transport modes;

METRANS ENGINEERING ensures the coordination of public utilities and their design through collaboration with public utilities owners and authorized companies.

DOMENII

MARIUS VLĂSCEANU
HEAD OF DEPARTMENT
+40 730 505 960

TRANSPORT PLANNING
SUPERSTRUCTURE/
INFRASTRUCTURE
AND PUBLIC UTILITIES

METRANS
engineering

VLĂSCEANU MARIUS



HEAD OF DEPARTMENT
TRANSPORT PLANNING,
SUPERSTRUCTURE/ INFRASTRUCTURE
TRANSPORT AND PUBLIC UTILITIES

UNIVERSITY STUDIES

Diplomacy geodesy engineer

U.T.C.B. - Technical University of Constructions,
Bucharest;
Geodesy Faculty,
Specialization: Cadastre

WORK EXPERIENCE

Metro line 5

Feasibility Study, related studies and analysis, documentation necessary for obtaining the approval through Governmental Decision, Technical Project, Documentation necessary for obtaining the required City Planning Certificate, Permits and Agreements, Building Permits; Urban Planning documentation related to the Urban Zoning Plans, Documentation for the allocation of contracts for execution.

Assistant Project Manager

Assistance provided to the Project Manager for the coordination of the project team for establishing the optimal technical solutions in order to elaborate the technical-economic design documentation for all phases of the project

Metro line 2. Improving the transport conditions on Metro line 2 Berceni- Pipera

Feasibility Study, related studies and analysis; Documentation for obtaining the necessary Permits and Agreements; Technical Project; Documentation necessary for obtaining the required City Planning Certificate, Permits and Agreements, Building permits, Documentation for the award of execution contracts, services, procurement; Documentation for obtaining financing from European funds; Documentation for obtaining financing from other international financing institutions

Project Manager

Coordination of the project team in order to establish the optimal technical solutions in order to develop the technical-economic design documentation for all phases of the project.

Urban zoning plan - closing the median circulation ring in the northern area. Urban zoning plan - urban highway - section between Lacul Morii and Soseaua Coletina

Contract Manager and Project Manager

Coordination of the project team in order to establish the optimal technical solutions in order to elaborate the technical-economic design documentation for the Feasibility Study and related studies and analyzes.

General plan specific plan

OF ACTIVITY



AREAS

NICOLETA DORIANA CĂPĂȚÎNĂ
HEAD OF DEPARTMENT
+40 758 246 888

DESIGN PLANNING, SCHEDULING
AND COORDINATION MANAGER
FOR CIVIL INVESTMENTS

METRANS
engineering



CIVIL PROJECTS MANAGEMENT PLANNING, COORDONATION, PERMIT ISSUING

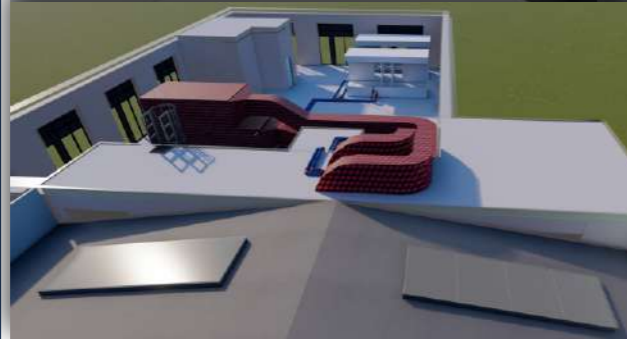
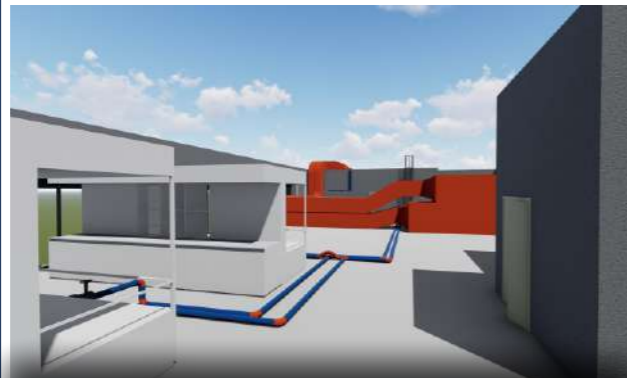
The aims of this department are to coordinate and manage the project development, to define the project strategies, to monitor the development and progress of the project in each phase and to ensure that the schedule is honored.

METRANS ENGINEERING ensures the centralization and verification of documents in order to obtain specialized approvals, specific to each type of investment.

OF ACTIVITY



TECHNOLOGICAL SYSTEMS AND INSTALLATIONS FOR CONSTRUCTION



AREAS

LIVIU SEVER POPA
HEAD OF DEPARTMENT
+40 744 332 020

TECHNOLOGICAL
SYSTEMS
AND INSTALLATIONS
FOR CONSTRUCTION

METRANS
engineering

METRANS ENGINEERING develops projects for a wide range of specialties in a flexible, complex and well structured system: low and high voltage, electrical traction and contact line, SCADA/BMS, HVAC installations, sanitary installations, mechanical installations, fire prevention and extinguishing systems, smoke extraction systems.

POPA LIVIU SEVER



ŞEF DEPARTAMENT SISTEME
TEHNOLOGICE ŞI INSTALAȚII
AFERENTE CONSTRUCȚIILOR

STUDII UNIVERSITARE

Electroenergetic engineer

Polytechnic University of Bucharest,
Faculty of Power Engineering,
Electroenergetics Department

WORK EXPERIENCE

Metro line 5 Architecture and installation systems. Ventilation shafts and man holes	Contract manager Coordinating the technical solutions and overseeing the collaboration between Entrepreneur, Engineer, Client and the design departments within Metroul SA;
Updating the electrical installations in 27 metro stations. Installations, architecture and structural engineering works;	Contract manager Coordinating the technical solutions and overseeing the collaboration between Entrepreneur, Engineer, Client and the design departments within Metroul SA;
Metro line 4 Putting into operation Segment 1 - Nicolae Grigorescu 2 - Anghel Saligny	Contract manager Coordinating the technical solutions and overseeing the collaboration between Entrepreneur, Engineer, Client and the design departments within Metroul SA;
Metro line 4 Metro line 5	Professional experience - Project Leader Low and high voltage currents, direct current traction, SCADA, HVAC, electromechanic systems: escalators, civil protection, water supply, fire extinguishing systems and sewerage.
Feasibility Study - Metro line 4/5/6/7 - Upgrading the installation systems on metro lines 1, 2 and 3. - Facilities for disabled people's access in the existing metro network	Work experience - Electromechanics engineer within multiple studies and specialized documentations.

OF ACTIVITY



ARCHITECTURE, URBAN PLANNING AND ENVIRONMENTAL IMPACT ASSESSMENT

In architecture and urban planning, concept is the one which dictates that the object of the investment satisfies the client's requirements in a balanced way, integrating them in an existing urban tissue, all the while taking into account the environmental impact of the project.

Globally, the Environmental Impact Assessment is recognized as a sustainable development instrument. The EIA process has to propose mitigation measures to avoid, reduce or minimize the negative impact on the environment, public health and property and may highlight the impact.

The principles of architecture and urban planning applied on an investment object, have the role of offering the citizen both a positive visual impact and a functional element that has a contribution in his quality of life.

AREAS

MĂDĂLINA ȘTEFANIA TRICĂ
HEAD OF DEPARTMENT
+40 766 211 255

ARCHITECTURE,
URBAN PLANNING AND
ENVIRONMENTAL
IMPACT ASSESSMENT

ETRANS
engineering

TRICĂ MĂDĂLINA



**HEAD OF THE ARCHITECTURE,
URBAN PLANNING AND
ENVIRONMENTAL IMPACT
ASSESSMENT DEPARTMENT**

UNIVERSITY STUDIES

Architect -
"Ion Mincu" University of Architecture and Urbanism,
Bucharest

WORK EXPERIENCE

Metro line 6 Concept and architectural design	Lead architecture designer, architect Concept drafting, feasibility study drafting for the architecture works, coordinating all the involved departments. The design of a metro station on Line 6: Piața Montreal.
Metro line 5 Concept and architectural design	Architect, Consultant The design of a metro station on Line 6: Academia Militară, drafting the documentation for the Technical Project, Consultancy and Technical Support for the entire project implementation period. Contract Manager, Architecture Project Leader
Accessibility of subway stations for the visually impaired Concept and architectural design	Concept, drafting the documentation for the feasibility study, task delegating within the team, coordinating with the specialists involved, presenting the project to the Client and Authorities involved in approving the project, drafting the documentation for the Technical Project and Execution Details.
Metro line 4 Putting in operation works. Finishes and partitions. Stația Jiului	Architect, Consultant The design of a metro station on line 4: Jiului, drafting the documentation for the Technical Project and Execution Details, Consultancy and Technical Support for the entire project implementation period.
Civil buildings projects Underground pedestrian passage between Mureș Square and metro station 1 Mai; Upgrading the traffic conditions - Pasaj Obor; Rehabilitating the educational infrastructure in the Bucharest Municipality; Rehabilitation, modernization and endowment of a cultural center.	Architect, Consultant Concept, drafting the documentation for the feasibility study, coordinating with the specialists involved, drafting the documentation for the Technical Project and Execution Details.

OF ACTIVITY



AREAS

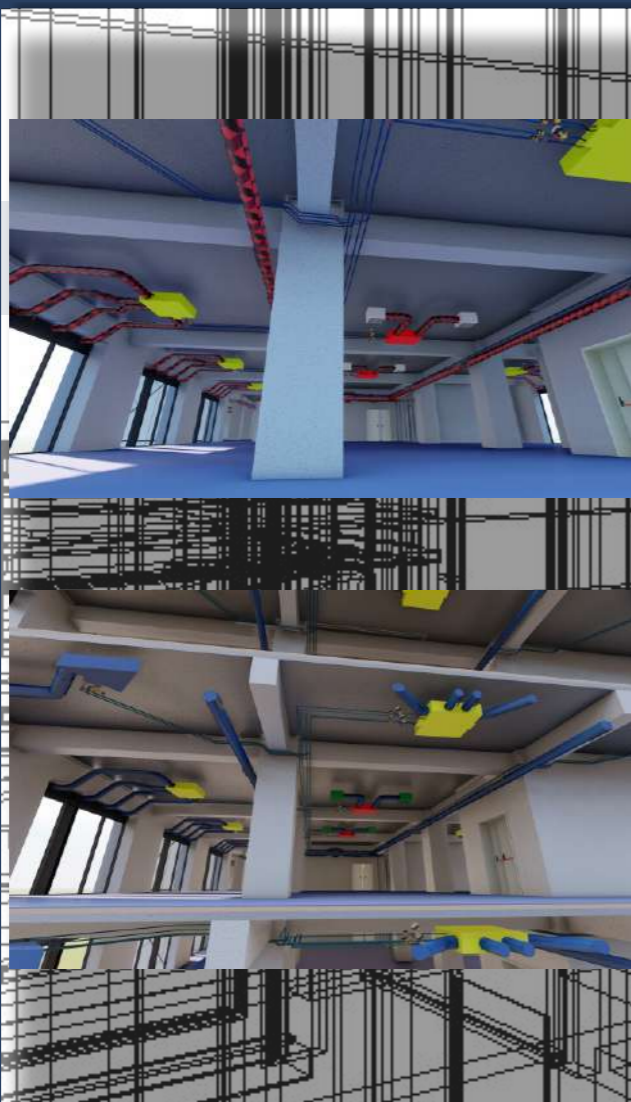
STRUCTURAL ENGINEERING

EXTERNAL COLLABORATOR

METRANS
engineering

Ensuring construction resistance and stability is achieved through dedicated softwares that use the finite element method but also by using software notes compliant with Eurocode rules. Our team is therefore ready to provide solutions that are applicable in any European country and beyond.

The detailing of reinforced concrete and metal structures is achieved by softwares that provide automatic generation of reinforcement extractions and steel element cuts: parts, welded assemblies.



GABRIEL SERGIU STĂNICĂ
HEAD OF DEPARTMENT
+40 724 581 192

BUILDING
INFORMATION MODELLING

ETTRANS
engineering

B I M (Building Information Modelling)

The concept of BIM or Building Information Modeling is quite simple, it is the process of creating and managing information for the life cycle of a construction project. The building information model - the digital description of each aspect of the construction process, is one of the key results of the process.

The model is based on the collaborative information assembled and updated in the key stages of the project. Creating a digital building information model allows those who work with or interact with the building to optimize actions while providing greater value of life.

A key aspect to consider is that BIM aims to minimize or eliminate information loss through the process of designing, building and operating a building. At each stage, structured information should be added to the BIM model. This information will allow the design team to make informed decisions at the right time, eliminating the risks and ensuring the delivery of a better building.



**Contract Feasibility Study, Preliminary
Technical Design, Tender documents –
Cluj Napoca Metro**

SIGNATURE DATE
23.04.2020

CONTRACT VALUE
30.186.000 lei (aprox 6.160.408€)

CONTRACT DURATION
26 months

JOINT VENTURE
SWS Engineering SPA (lider 37%)
Systra SA (35%)
METRANS Engineering SRL (28%)



**METROPOLITAN TRAIN "GILĂU –
FLOREȘTI – CLUJ-NAPOCA – BACIU –
APAHIDA – JUCU – BONȚIDA" –
STAGE 1 OF THE FAST METROPOLITAN
TRANSPORT SYSTEM
CLUJ METRO LINE 1 AND
METROPOLITAN TRAIN, INCLUDING
THE CONNECTION BETWEEN THEM**





**Contract Extension Metro Line 5 - Bucharest.
Technical and Detailed Design Including
Technical Assistance**

SIGNATURE DATE

29.10.2021

CONTRACT VALUE

39.660.707 lei (aprox 8.094.022€)

CONTRACT DURATION

60 months

(from which 24 months for design)

JOINT VENTURE

3Ti Progetti Italia Ingegneria

Integrata SpA (lider 35%)

SWS Engineering SPA (lider 25%)

METRANS Engineering SRL (30%)

Coding SRL (10%)



SWS

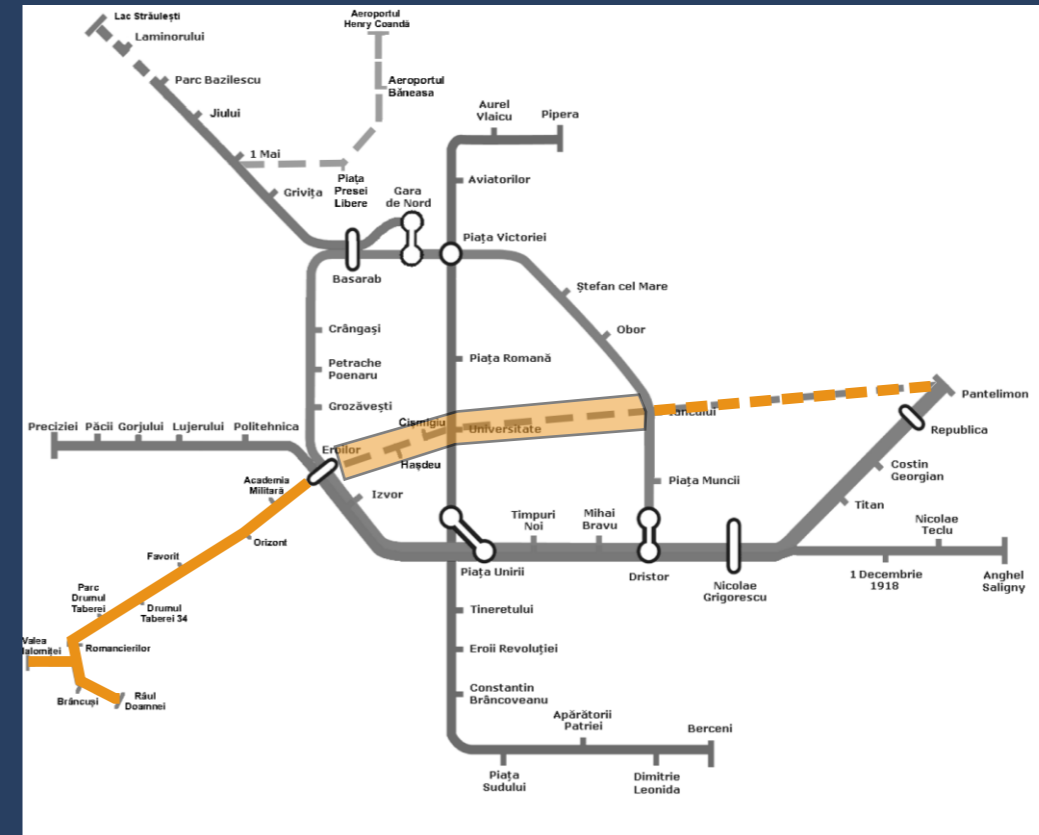
METRANS

CODING

GENERAL ENGINEERING & PLANNING

**EXTENSION
METRO LINE 5**

**(Drumul Taberei – Pantelimon)
EROILOR (PS OPERĂ) –
PIAȚA IANCU LUI**





29



30





Modification of the nursery and daycare center – DGASPC Sector 4 Nițu Vasile/ Ciceu/ Ion Enache | Modernization of County Hospital 2 Râmnicu Vâlcea | Modernization of Summer theatre Bazilescu | Modernization of the Excelsior theatre | Building kindergarten Episcop Chesarie |

PORTFOLIO

Modernizing education buildings in Sector 2 | Modernizing preschool education buildings in Sector 4 | Modernizing Military Unit 974 | Modernizing Military Unit 3077 | Underground parking in Tulcea Municipality | Building storage and deposit spaces for Husqvarna | Rehabilitation of office building for Conpet SA – Ploiești | Modernizing – Highschool extention – Roșia de Amaradia | Middle school grades I- VIII Săhăteni | Daycare & protected housing – Malu, Izvoarele, Tântava | Individual housing | Collective housing |

PERSPECTIVE / AUCTIONS DESIGN & EXECUTION

Rehabilitation of the ASE building | Metro line 5. Drumul Taberei – Universitate. Eroilor – Piața Iancului segment. | Metro line 6. 1 Mai – Otopeni | Târgu Neamț – Ungheni highway | Modernizing CFR Timișoara – Arad. Lot 4 Ronat Triaj – Aradu |

PARTNERS SYSTRA France | SWS ENGINEERING SPA Italy | 3TI PROGETTI – Italy | IDOM – Spain | AISTOM – France |

CLUJ MUNICIPALITY TOWN HALL | DGASPC Giurgiu | BERTEA DISTRICT TOWN HALL | SĂHĂTENI DISTRICT TOWN HALL |

BAUSTARK SRL – Romania | YARDMAN SRL – Romania | GEOSTUD SRL – Romania | TTL PLANNING – Romania |

EXPERIENCE

INVESTMENT in the field of public transport in subway infrastructure

IN THE LAST 15 YEARS:

- We have participated in the establishment and implementation of technological solutions for all new metro lines in the Bucharest network, starting from the pre-feasibility / feasibility study phase, to the drafting of the documentation for the Technical Project phase, Assignment Documentation, Execution Details, Reception at Completion of Works
- We participated in the modernization and compatibility of the existing metro lines, implementing state-of-the-art solutions, in accordance with the requirements of the legislation in use;
- We participated in the elaboration of financing documentation from non-reimbursable European funds to ensure the necessary budget for the implementation of new or modernization subway projects.

INVESTMENTS in the civil constructions field

- We participated in the establishment and implementation of technical solutions for a diverse range of civil buildings, with the following functions: residential, educational, juridical, administrative, industrial and medical;
- We participated in the drafting of financing documentation from non-reimbursable European funds to ensure the budget necessary for the implementation of the projects.

